

M E P S O L U T I O N S

Epic Engineering provides quality and comprehensive consulting and design services for commercial and residential building mechanical, electrical and plumbing systems at affordable rates. Whether you're an architect designing a new building, or you're a municipality looking to update your current facilities, Epic's team of experienced designers will maximize your project dollar, providing you with efficient, attractive systems.

M E C H A N I C A L S Y S T E M S

Our experts have designed mechanical systems for new buildings and updated systems in existing buildings. We regularly perform the following services:

- HVAC Design
- Load Calculations
- Duct layout and sizing
- Equipment schedules
- Secondary system design
- Central systems
- Split/inverter systems
- Heating systems
- Ventilations and purge systems
- Net zero, LEED compliant
- Kitchen exhaust design

E L E C T R I C A L S Y S T E M S

From solar generation to multi-residential, our electrical designs are state-of-the-art and efficient.

- Power and lighting layout
- Load calculations
- Panel Schedules
- Riser diagrams and distribution layout
- Fire alarm systems
- Data and telephone systems
- Audio/Video systems
- Communication systems
- Security systems
- Automated lighting control systems
- Lighting Protections
- TVSS (Transient Voltage Surge Suppressor)
- Sight lighting
- Photometrics
- Alternative power
- Secondary system design
- Solar arrays
- EV charging systems

P L U M B I N G S Y S T E M S

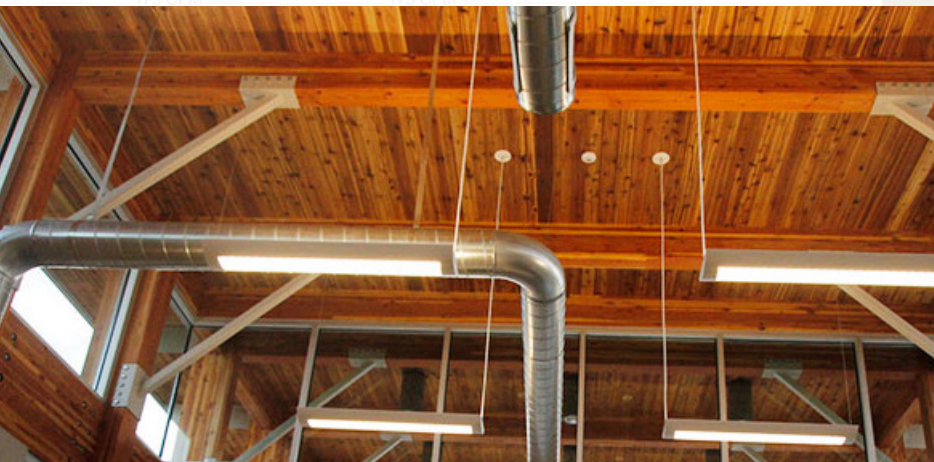
We'll get your plumbing system designed efficiently, from ceiling to floor.

- Plumbing design
- Domestic water
- Natural and LP gas
- Isometric design and layout
- Wastewater systems
- Grey water recovery
- Sanitary storm drain systems
- Fixtures and specifications
- Swimming pool layout calculations and design for piping
- Septic design



W H O I S E P I C ?

Epic Engineering, P.C., was founded in 1997 to provide civil engineering services to municipalities. Since that time, we have expanded our offering to become a full-service architecture and engineering firm with more than 60 employees at multiple offices throughout the West. We provide our clients with a single contact who has access to teams of experts. From design to construction management to inspection, we help clients turn concepts to reality.





MEP SOLUTIONS

ECKER HILL PARK AND RIDE

Epic Engineering provided electrical and electronic systems design for improvements to this park & ride facility near Park City in Summit County, Utah. This included high-efficiency LED lighting design, an access control system, solar design, and the inclusion of EV charging stations. We designed for an Automatic Vehicle Location (AVL) to track bus arrivals, along with a security system with a live feed to the Summit County Sheriff Department.



KARL MALONE DEALERSHIP

As part of a multi-faceted design project that included civil engineering, structural engineering, geotech and more, Epic Engineering provided electrical design, plumbing design, and HVAC design for this brand new car dealership in Heber City, Utah. The building includes a large showroom, offices, and multiple mechanics' bays.

MEP EXPERTS



KYLE CARLSON, PE | ELECTRICAL DESIGN LEAD

Mr. Carlson is the lead electrical design engineer at Epic Engineering. With a bachelor's and master's degree in Civil Engineering from Utah State University, he has more than 10 years of experience in a variety of services, including electrical designs for multiple pump stations, refineries, solar arrays, commercial office buildings, and large apartment complexes.

Mr. Carlson has experience with motor control centers, pumps, exterior lighting, interior lighting and electrical systems for industrial, commercial, and residential developments. He has completed the designs of electrical systems for multiple municipal water and secondary water projects. He has also been involved in the design of several solar PV systems and in the quality control review of many more solar PV designs by various installation contractors.



DILLON FUGATE | MECHANICAL AND PLUMBING DESIGN LEAD

Mr. Fugate is the lead designer for the mechanical and plumbing designs performed by Epic. He is experienced in overall HVAC design, including heat load calculations, furnace and air conditioning sizing, duct and plenum sizing, supply ducting, return air ducting, venting, radiant heating, and snow melt.

He is also experienced in plumbing design, including plumbing fixture counts, building water demands, utility meter sizing, hot- and cold-water pipe sizing and layout, sewer drain pipe sizing and layout, sewer venting, gas pipe sizing and layout, compressed air sizing and layout, vacuum pipe design and layout, grease and oil traps and sampling manhole design. He is proficient in energy compliance reports, including COM check, RES check, and ACCA manual (J,D,S) heat loss calculations.

LET'S TALK ABOUT YOUR NEEDS.

HEBER CITY
Corporate Office

50 E. 100 S.
Heber City, UT 84032
435.654.6600

WEST VALLEY, UT
801.955.5605

PROVO, UT
435.315.3742

VERNAL, UT
435.781.2113

WILLISTON, ND
701.774.5200

PRESTON, ID
208.852.3742



www.epiceng.net

