



GEOTECH SERVICES

Epic's geotechnical engineers work across a spectrum of project types and sizes—from small commercial jobs to large municipal roadways, from preliminary feasibility studies to design and construction testing. We can expertly examine materials and conditions to help you understand your site's soils, slope stability, and groundwater levels and ensure that structures and facilities will perform safely and reliably.

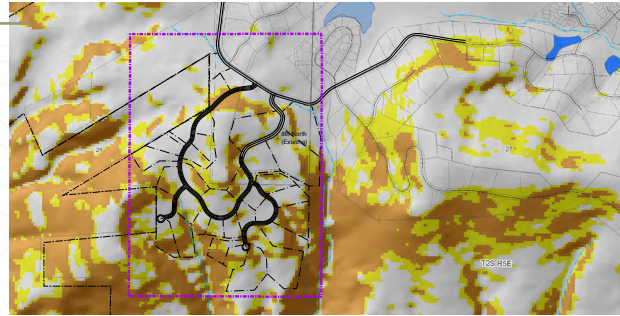
ANALYZING RISKS CALCULATING SOLUTIONS

Geotechnical risks can affect projects in a big way, both in cost and time spent mitigating them. These risks result from a range of hazards associated with geological conditions and processes both seen and unseen. That's why you need a trusted expert to help you determine the risks and recommend smart solutions.

Our geological and geotechnical professionals perform thorough, systematic assessments of the nature and the source of the various hazards on all sites, from steep slopes to low-lying farmland. We use the latest analytical technology and practices to analyze soils along with the latest GIS (Geographic Information System) data to provide a comprehensive report on a site. •

After analyzing the risks, our in-house, licensed geologist and geotech specialists work with our civil and structural engineers to design common-sense solutions that are reliable and cost-effective. From finding the right ground fill to designing attractive, functional retaining walls, they will help you build a solid foundation for your next project.

- Foundation analysis
- Slope stability modeling and design
- Retaining wall modeling and design
- Liquefaction analysis
- Lateral spreading analysis
- Bearing pressure analysis
- Settlement and consolidation analysis
- Asphalt and concrete pavement design
- Stabilization of soils
- Compaction techniques
- Drainage design and solutions
- Soft soil modification techniques
- Pile and pier foundations
- Groundwater analysis



WHO IS EPIC?

Epic Engineering, P.C., was founded in 1997 to provide civil engineering services to municipalities. Since that time, we have expanded our offering to become a full-service architecture and engineering firm with more than 60 employees at multiple offices throughout the West. We provide our clients with a single contact who has access to teams of experts. From design to construction management to inspection, we help clients turn concepts to reality.





GEOTECH SERVICES

LICENSED, IN-HOUSE TESTING AND ANALYSIS

Since our inception, we have made it a primary focus to provide exceptional in-house materials testing services to our clients. All of our laboratories are certified in aggregate testing, in-place soils testing (nuclear gauges), concrete testing including air entrainment, slump, and concrete cylinders, and asphalt extractions. In addition, we have a mobile material testing laboratory that is able to be moved to construction sites for on-site testing throughout the duration of the project.



All Epic Engineering laboratories are certified with AMRL, CCRL, AASHTO and UDOT, and comply with all federal, state and local laws, rules, regulations, ordinances and statutes, as well as all standardization and compliance testing requirements. Personnel that work in the lab and in the field are also certified by WAQTC.

GEOTECH EXPERTS



TORREY COPFER, PG | ENGINEERING GEOLOGIST

Torrey has more than 17 years of experience in engineering geology – varying from construction materials analysis and management, structural, and industrial – to geotechnical engineering for federal, state, local, and tribal clients. His education enables him to be a multi-disciplined geologist and a technical expert with a critical eye towards influential conditions. He possesses a broad range of technical skills, rigorous logic, and an understanding of methodology to effectively solve difficult problems while meeting budgets and schedules.

Torrey provides technical direction and project management for all geotechnical and geologic projects and services for Epic Engineering. He performs a variety of geotechnical and geologic services, ranging from field investigations, managing and reviewing laboratory testing and procedures, reviewing and analyzing data, and designing and reviewing specifications for large to small construction projects. He also performs the creation of finite element and iterative models for slope stability and settlements, designs multiple types of retaining wall systems, creates detailed construction drawings, reviews multi-faceted drawings for implementation of geotechnical aspects, and writes and reviews technical reports in a variety of sectors.



KOREY WALKER, PE

Korey received his bachelor's degree in civil engineering from Brigham Young University and has been working professionally since 1991. Having served as a city engineer, assistant city engineer and district engineer for over 21 municipalities, he has project management skills and technical expertise in municipal, industrial, water resources, and planning. Korey's project management and technical skills have been utilized on many projects requiring a significant amount of geotech engineering, including pump stations, large- and small-diameter piping, water quality, water treatment, water storage, roadway design, industrial piping, and oil and gas lines. He has designed rock, shotcrete, and concrete retaining walls in addition to overseeing ongoing geotechnical reports, soil slope stability evaluations, and footing designs.

LET'S TALK ABOUT YOUR NEEDS.

HEBER CITY
Corporate Office
50 E. 100 S.
Heber City, UT 84032
435.654.6600

WEST VALLEY, UT
801.955.5605

PROVO, UT
435.315.3742

VERNAL, UT
435.781.2113

PRESTON, ID
208.852.3742



epic

www.epiceng.net

